



Access fun Grade 8–12 quizzes, matric past papers, K53 learner mock tests, and NBT prep!

*All in one easy-to-use app.*

**DOWNLOAD GO STUDY NOW**



Tap on the buttons above to download the app

 [www.gostudy.club](http://www.gostudy.club)



**NATIONAL  
SENIOR CERTIFICATE**

**GRADE 11**

**NOVEMBER 2018**

**MATHEMATICAL LITERACY P2  
ADDENDUM**



---

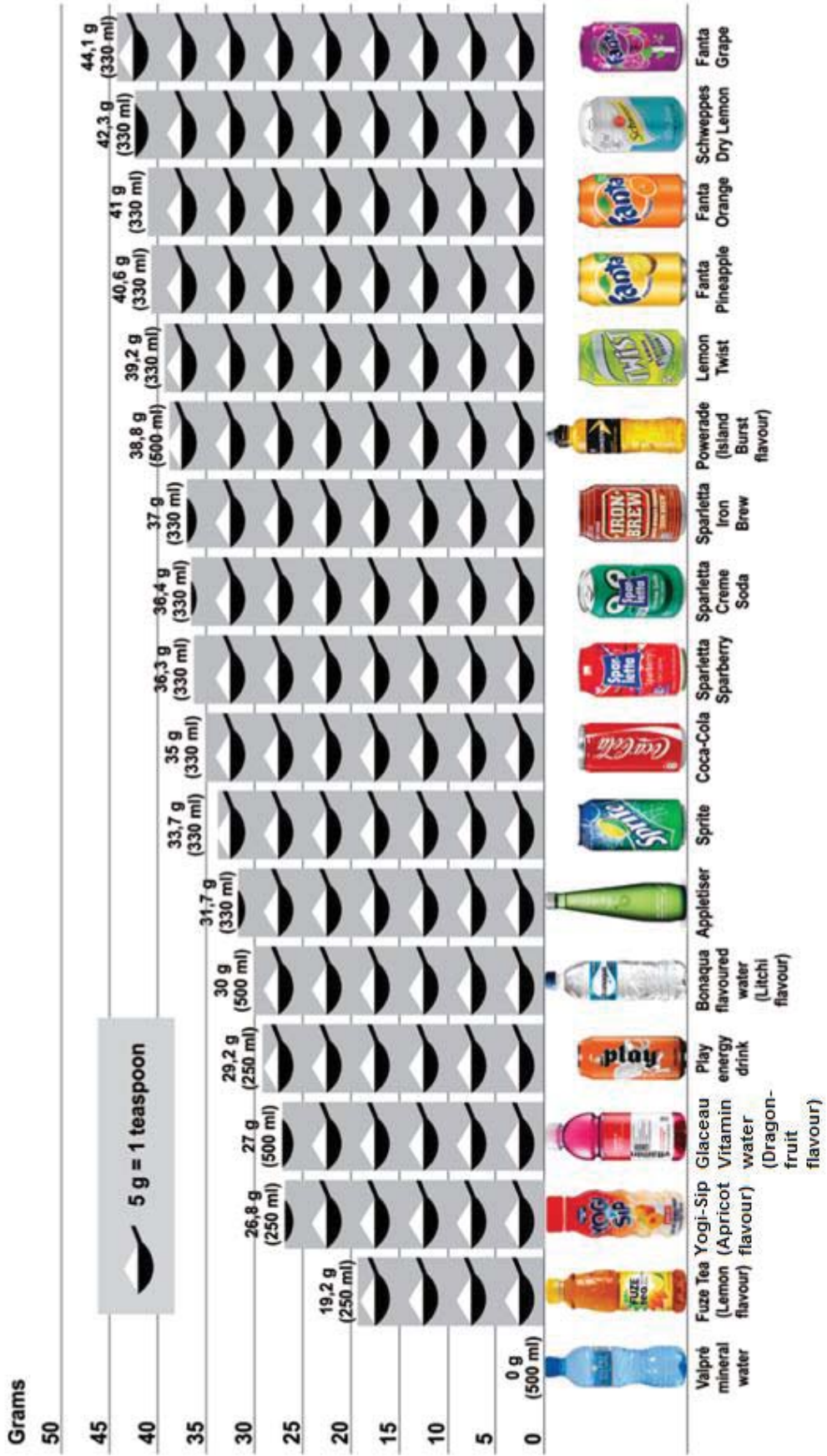
This addendum consists of 4 pages with a 3-page of annexures

---

ANNEXURE A

QUESTION 2.2

We gathered a few popular drinks from our canteen's refrigerator to check how much sugar each one contains. The results were surprising. Even 'healthier' drinks, such as flavoured mineral water and drinking yoghurt, contain a large amount of sugar.



## ANNEXURE B

## QUESTION 3

										Pretoria
									Port Elizabeth	1120
								Polokwane	1393	273
							Nelspruit	320	1373	342
						Mafikeng	589	565	1122	292
					Kimberley	360	832	805	752	532
				Johannesburg	467	273	358	331	1062	58
			East London	992	750	1029	1214	1323	300	1050
		Durban	667	598	842	859	689	929	927	656
	Cape Town	1660	1042	1402	960	1320	1779	1736	756	1463
Bloem- fontein	998	667	575	417	175	427	771	748	635	475

ANNEXURE C

QUESTION 4.2

